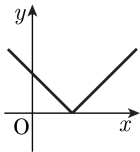
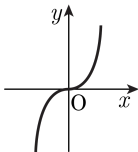


1. 다음 함수 $y = f(x)$ 의 그래프 중 역함수가 존재하는 것은?

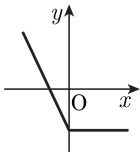
①



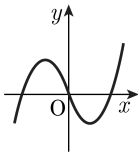
②



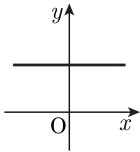
③



④



⑤



2. 함수 $y = -x - 1$ 의 역함수의 그래프에서 x 절편을 a , y 절편을 b 라 할 때, ab 의 값은 얼마인가?

① -2

② -1

③ 1

④ 2

⑤ 3

3. 함수 $f(x) = 2ax - a + 2$ 에 대하여 $f^{-1}(-7) = 2$ 일 때, 상수 a 의 값은 얼마인가?

① -5

② -3

③ -1

④ 1

⑤ 3

4. 함수 $f(x) = 2x - 5$ 의 역함수를 $y = f^{-1}(x)$ 라 할 때, $f^{-1}(-3)$ 의 값은 얼마인가?

① -3

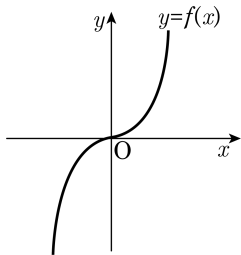
② -1

③ 0

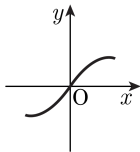
④ 1

⑤ 3

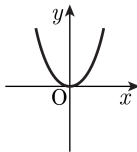
5. 함수 $y = f(x)$ 의 그래프가 그림과 같을 때,
 다음 중 $y = f^{-1}(x)$ 의 그래프로 적당한 것은
 무엇인가?



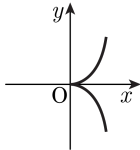
①



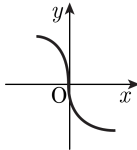
②



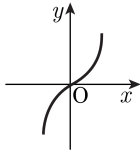
③



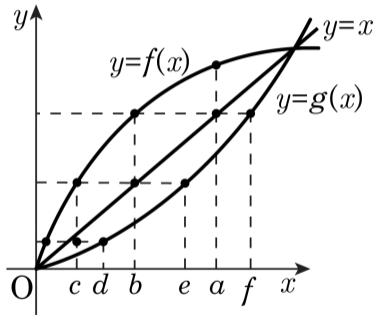
④



⑤



6. 다음 그림은 세 함수 $y = f(x)$, $y = g(x)$, $y = x$ 의 그래프이다. 이때, $(f \circ f \circ g)^{-1}(a)$ 의 값은?



① a

② b

③ c

④ d

⑤ e